



# EMCAT PRO® Software

NEW Version of Motor Circuit Analysis Software for Predictive Maintenance, Troubleshooting and Condition Monitoring Of Electric Motors, Generators and Transformers

EMCAT PRO® software provides total de-energized Motor System Maintenance and Management for your organization. The software integrates seamlessly with the ALL-TEST IV PRO™ Motor Circuit Analyzer and data collector to create a complete PdM tool incorporating route, work order management and extensive diagnostics.

The software is based on input from our industrial users and service organizations, and is a powerful tool for tracking, scheduling and maintaining records of AC/DC electric motors and transformers. It provides an easy to use Motor Maintenance and Management System for your organization whether you are a service company or an in-house maintenance department. EMCAT PRO® integrates seamlessly with the ALL-TEST IV PRO™ Motor Circuit Analyzer and data collector to create a complete PdM tool incorporating route, work order management and extensive diagnostics.

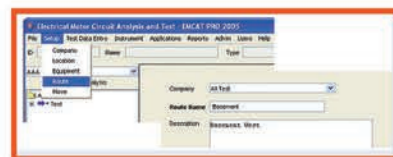
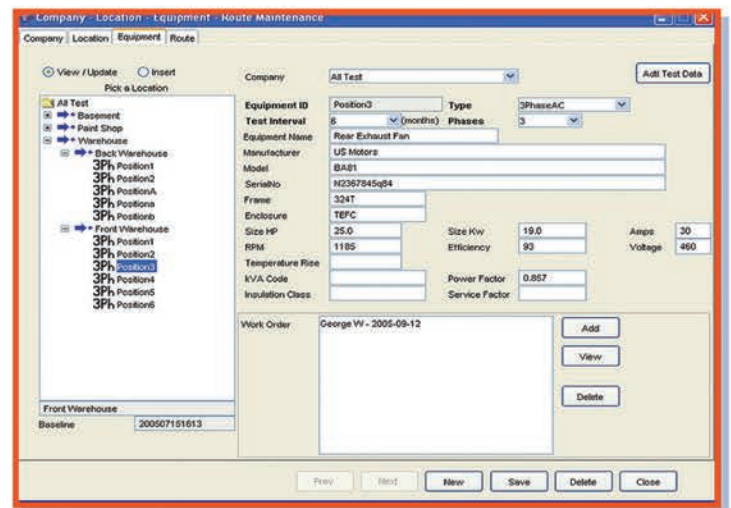
EMCAT PRO® is also available for multiple user applications. EMCAT PRO® Enterprise software allows for concurrent users to share a single database. This enables multiple technicians to easily share motor and transformer testing analysis findings throughout the company.

## Comprehensive Database

At the heart of EMCAT PRO® is a database where you collect and organize nameplate information from all of your motors and transformers. For a manufacturing site, records can be grouped by building and/or process. For a service organization, records can be grouped by customer name and location. It is designed to readily support both in-house and contract service organizations. EMCAT PRO has the fields and flexibility you need to clearly identify any motor, device or customer.

## Route Management and Maintenance Scheduling

For predictive maintenance and condition monitoring, EMCAT PRO® lets you create "routes" of devices for scheduled testing. Work orders can be printed, and motor data can be downloaded to and from the ALL-TEST IV PRO™.



## Diagnostics and Trending

Built-in diagnostic algorithms take the guesswork out of interpreting test results. Separate profiles are provided for AC motors, DC motors and Transformers. Evaluation of rotor test data is also built in; a unique Rotor Grading System (RGS) gives a diagnosis and "grades" the rotor. All measurements, including rotor grades, can be trended for predictive maintenance.

## Collect all your Data in One Program

EMCAT PRO® provides fields to record test data from other PdM technologies including Vibration, IR, Current Signature, P.I., Ultrasound, and High Potential test results. Evaluate all aspects of machine health from within a single program!

## Extensive and Flexible Reporting

Standard reports include:

- Detailed test reports and trend reports for individual devices
- List of equipment to be reviewed as indicated by previous tests
- Past-due maintenance items

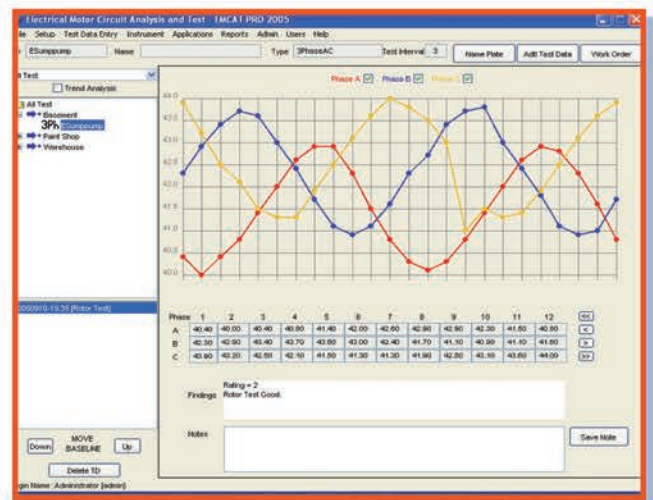
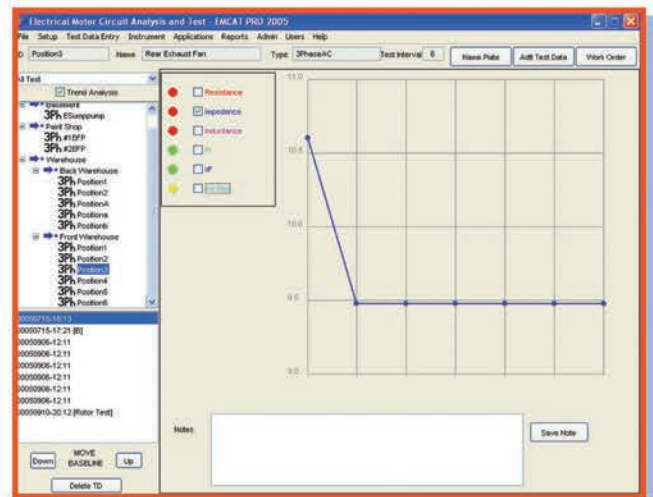
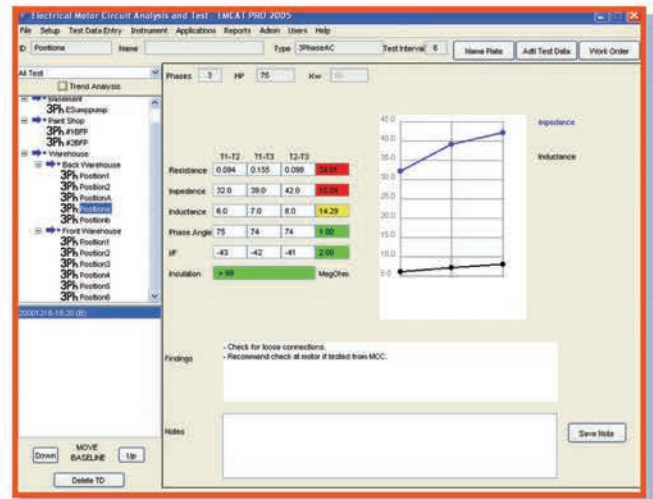
## Interface with Your CMMS

You may already have a CMMS that handles scheduling and work orders. We've incorporated a module within EMCAT PRO® that allows data to be shared. We can also customize the program to integrate with your in-house system. Contact the factory for details.

## System Requirements

- Windows XP, Vista, or Windows 7 (64 Bit)
- Pentium computer or equivalent
- 256 MB RAM
- 15 inch screen on laptop or 17 inch screen on PC
- 1024 x 768 resolution, minimum Color or B&W printer for reports
- RS-232 port or adaptor (for communication with ATIV™)
- USB port for EMCAT PRO® security key

Learn more about how EMCAT PRO® can help you improve your plant performance. Email us at [sales@alltestpro.com](mailto:sales@alltestpro.com) for a quotation to upgrade or purchase new. We will also be happy to send you a demo disk or arrange for a free demonstration over the web.



Specifications are subject to change without notice.

### ALL-TEST Pro, LLC

P.O Box 1139  
 Old Saybrook, CT 06475  
 Tel 860-399-4222  
 Fax 860-399-3180  
 Email [info@alltestpro.com](mailto:info@alltestpro.com)  
 Web [www.alltestpro.com](http://www.alltestpro.com)

Represented by: